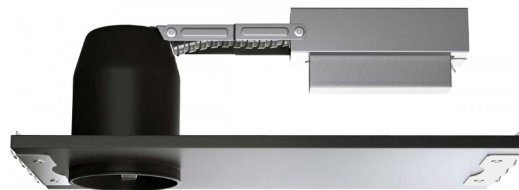
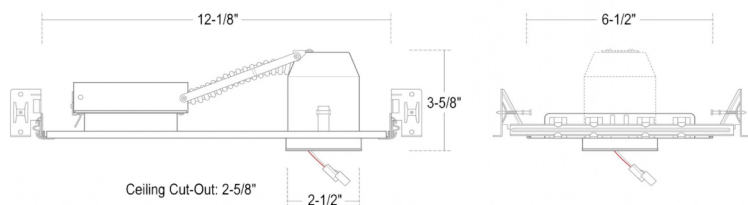


LHLD2ICA9C20 - INSULATION CONTACT (AIRTIGHT) 2" 10W SERIES



SPECIFICATION

120V input 10W LED

Application: This miniature LED housing is perfect for low to medium height ceilings in residential and light commercial applications. Its small aperture makes it ideal for strategic

Housing: Pre-wired .05" baked enamel 1-piece drawn steel plaster frame's collar adjusts up to 3/4" ceiling thickness. Integral thermal protector to guard against improper lamping and installation. Trim is secured with internal ClickLok™ locking mechanism. Housing is easily removed from plaster frame for remodel applications.

Mounting: Housing suitable for new construction and remodel installations, supplied with (2) 24" adjustable hanger bars. Hanger bars equipped with nail-less install 3/4" serrated barbed studs and with captive nails, for faster and easier secure mounting in wood joists. Set-screws lock into position and prevent shifting after installation. Earthquake structural cable compatible for drop panel ceiling or any other mounting that requires direct support from structural ceilings.

Driver: Electronic Direct Current U.L. Listed driver mounted away from LED Array for cool operation and end-of-life modularity. Comes standard with 120VAC input.

Dimming: Standard dimming option smoothly dims down to 5% of initial light output with flicker-free performance. Works with standard incandescent dimmers. Factory qualified for use with Lutron brand dimmers: S600PR, DVSCCL-153P & DV600PR as well as Leviton IP106-600W. Also works with standard electronic low voltage (ELV) dimmers. Factory qualified for use with Lutron brand dimmers: SELV300P, DVELV-300P, MAELV-600 and NELV-450.

Power Connection: LED lamp array is replaceable via on board quick disconnect terminal. Meets CA Title 24 Requirements and other standards restricting the use of Medium Base or Bi-Pin Sockets.

Junction Box : 1-6-gauge pre-wired galvanized steel Junction Box. 20 cubic-inch for a maximum of (8) #12 AWG wires. (2) Romex knock-outs. Remove covers for easy access access and ground wire. For 1/2" Pipe or Flex-Conduit (LITON# PCT031) Fitting Adaptor should be used. Consult Factory.

Insulation Contact: IC rated housing suitable for low to medium density blown in insulation.

Safety Labels: ETL/CETL/UL listed. Suitable for damp and wet locations. NYC approved: Calendar #41937.

Warranty: Covered by a 3 Year Warranty to be free of defects in materials and craftsmanship. Recommended for applications where ambient temperatures do not exceed 35°C, installations exceeding this temperature will result in reduced LED lamp life and a voided warranty.

COMPATIBILITY

 LRLDQ293 SQUARE BAFFLE	 LRLD1288 ADJUSTABLE GIMBAL	 LRLDQ221 SQUARE REFLECTOR
 LRLDQ288 ADJUSTABLE SQUARE GIMBAL	 LRLD1221 SMOOTH REFLECTOR	 LRLD1293 BAFFLE

Note: Wattage limitations on compatible items must be met.

Driver: Available in 120V ELV/Incandescent Dimming and 120V/277V 0-10V/ELV/Incandescent Dimming.

Label: cETL Listed

LED Details:

~10W 700 + Lumens Delivered
Color Rendering Index (CRI): 90
Color Temperature: 3,000K
Lamp Equivalents: 75W A19, 50W PAR20 FL, 50W MR16 FL

Benefit:

- ICA is heavy duty aluminum alloy
- Dual purpose New construction housing includes plaster frame
- Driver mounted on external J-Box for cooler LED operation

2023.04.06

FEATURE:



ORDERING EXAMPLE : LHLD2ICA9C20

LHLD2ICA9C20

DRIVER

LHLD2ICA9C20

Blank :120V ELV/Incandescent Dimming

UE-DUN:120V/277V 0-10V/ELV/Incandescent Dimming

